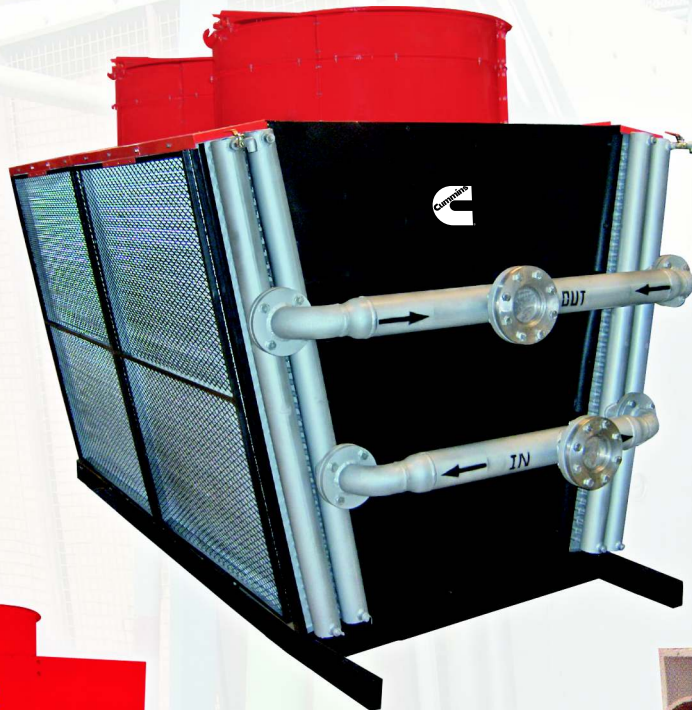


EVERY™ FLUID SYSTEM AIR COOLED



Induced draft heat transfer coils with Vertical and Horizontal air flow

Cummins Sales and Service (I) Limited
Erandawana, Pune 411 038, India.
M: 9822017644 Tel. : (91) 020-3027 8000
Fax : (91) 020-2543 9490
E-mail: satish.s.acharya@cummins.com

Air Cooled Fluid Cooler

**Strategic alliance with Coil Co.
Over 250 successful installations.
Every Industry, Every Segment.
40 % repeat customers.**

(Telecom, Textile, Glass, Refineries, Defence, Chemical, Pharma, Engineering, Cement, BPO, Airports, Hospitals, Hotels)

Benefits

- Cooling media is free-ambient-air, 100% water saving
- Water treatment plants & chemicals not Required
- No scale formation
- No deration of DG set during extreme ambient conditions
- Cooling tower, Heat exchanger & Water circulation pumps are not required if connected in primary
- Substantial power saving during mild weather conditions
- No air or water pollution
- Maintenance free system
- 2 years warranty in line with engine warranty
- Attractive pay back
- Option to choose 'S' or 'H' models for any space constraints

Value added features (Optional)

- Weather proof coated
- Low dB noise level-(72-75dB)
- Automatic fan controller
- Roof top installation with hot well system

Cautions

- Maximum vertical distance from the engine top should not exceed 3m & horizontal distance should not exceed 10m, if connected in primary
- Make sure that all internal pipelines are flushed / cleaned properly
- Sizing & selection of Raw Water Pump is site specific
- Single unit for multiple engines or DG sets not allowed if connected in primary circuit
- Offerings on gas engines are case specific

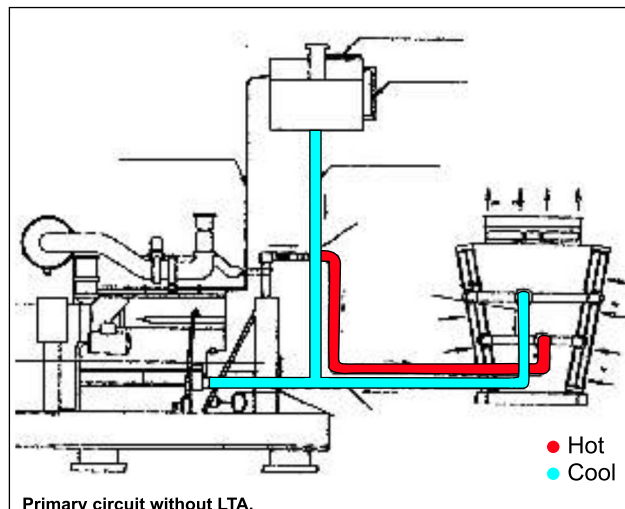
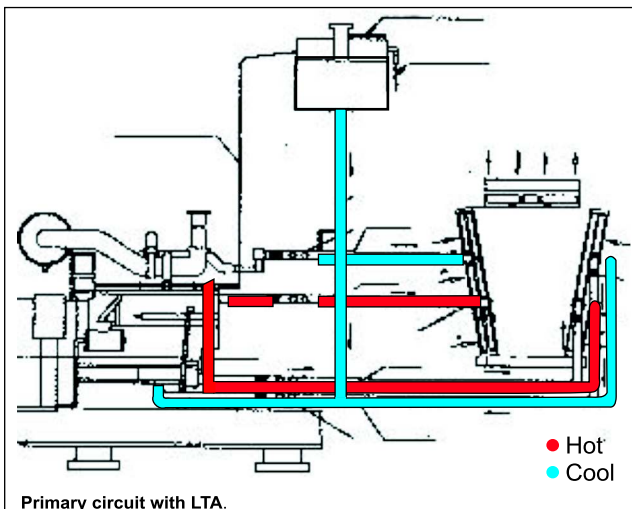
Technical Specifications of standard W - models

Model No.	Overall Dimensions l x w x h	(MOTOR)		(FAN)		Dry Weight Approx
		Qty.	H.P.	Qty.	DIA.	
FCS-015	1450 X 965 X 1370	1	2	1	762	300
FCS-020	1830 X 1090 X 1400	1	3	1	914	370
FCS-025	2210 X 1090 X 1400	2	2	2	762	180
FCW-040	2630 X 1680 X 1325	2	3	2	914	900
FCW-060	3645 X 1680 X 1350	2	5	2	1066	1400
FCW-080	3035 X 1890 X 2090	2	5	2	1066	1700
FCW-100	3135 X 2030 X 2495	2	7.5	2	1066	2000
FCW-120	3645 X 2030 X 2495	2	7.5	2	1219	2200
FCW-060 (LT+HT)	3645 X 1680 X 1350	2	5	2	1066	1370
FCW-100 (LT+HT)	3135 X 2030 X 2520	2	7.5	2	1066	1950
FCW-120 (LT+HT)	3645 X 2030 X 2495	2	7.5	2	1219	2150
FCW-140 (LT+HT)	4155 X 2030 X 2520	2	10	2	1219	2250
FCW-160 (LT+HT)	4660 X 2030 X 2520	3	7.5	3	1219	2950
FCW-200 (LT+HT)	5675 X 2030 X 2520	3	7.5	3	1219	3700

Quick selection for Cummins Engine

Engine Model	Prime rating KVA	ACFC	
		Primary	Secondary
N/NT/NTA 495 G	100/125/140	FCS-015	FCS-020
N/NT/NTA 743 G	200	FCS-020	FCS-025
NTA 855 G/G2	250/285	FCS-025	FCS-030
NTA 855 G2(BC)	320	FCW-40 (LT+HT)	FCW-060
KTA1150 G	320 / 380	FCW-040	FCW-050
VT/VTA 1710 G	500	FCW-50	FCW-080
VTA 28 G	500	FCW-50	FCW-080
VTA 28 G5	600 / 625	FCW-060	FCW-080
KTA 2300 G	625 / 750	FCW-080	FCW-100
KTA 3067 G	1000	FCW-100	FCW-120
KTA 50 G3	1250	FCW-120	FCW-140
KTA 19 G4	500	FCW-060 (LT+HT)	FCW-080
KTA 38 G5	1000	FCW-100 (LT+HT)	FCW-120
KTA 50 G3 1P2L	1250	FCW-120 (LT+HT)	FCW-140
KTA 50 G8	1500	FCW-140 (LT+HT)	FCW-180
QSK 60 G4	2000	FCW-160 (LT+HT)	FCW-200

(HO may be consulted for proper sizing & selection of the coil coolers for gas engines as well as to any other non standard application.)



Major Key Accounts

- AAI
- Airtel
- Ambuja
- Asahi
- Avery
- Bayer
- Bharati Tele
- Britannia
- Bry Air
- Capsugel
- Clayton
- Delphi
- Easter
- Elgi
- Goodwill
- Haldiram
- HLL
- HPCL
- HTMT
- Hutch
- Hutsun Foods
- ICF
- Idea
- Intimate Fashions
- IOCL
- ISRO
- JCB
- Jindal
- Lakhani
- Laser z
- Mico
- MRF
- Navbharat
- Navy
- Orchid
- Pragati Glass
- Precot
- Prime Cotton
- Reliance Infocomm
- Ramlinga
- RPG Cables
- Safyeast
- Sahara
- SRF
- Subros
- Surya Nepal
- Talbro
- Tata SSL
- Tata Steel
- Tirupur Surya
- TVS
- WS Industries